

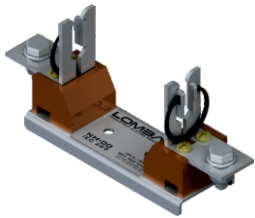
NH Fuse Base

Features



The basis are used for setting the fuses of NH kind, and it may be assembled individually or in groups depending on the necessity. The NH basis are produced for the usage of fuses at size 00 and 01, corresponding to a usage range up to A for 00 category and 250A for 01 category.

The contacts are produced in electrolytic copper with a superficial treatment ensuring a long Service life and the best electrical contact between the connections. The insulating materials are excelent in quality ensuring full insulation and security for its usage.



Technical Specifications

REF.	TYPE	DESCRIPTION	I (AMP)	MODEL
360	NH 00	NH00 FUSE BASE (2S)	160	NO CHARGE
361	NH 00	NH00 FUSE BASE (2T)	160	NO CHARGE
370	NH 01	NH01 FUSE BASE (2S)	250	WITH LOAD

S - SCREW
T - TERMINAL

