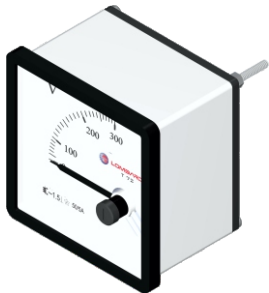


# Analog Voltmeter

## Features

It is used to measure the potential difference between two points, so it must always be connected in parallel with the section of the circuit from which the voltage is to be obtained. In order not to disturb the circuit, its internal resistance must be as high as possible.



## Technical Specifications

Type	Mobile iron system
Rated voltage	500 VCA
Dimensions	72 x 72mm - 96 x 96mm
Available Scales	250V - 600V
Pointer deflection	90°
Accuracy class	1,5 %
Permanent overload	1,2 x rated current (In)
Ambient temperature	-10°C + 40°C
Front frame	Plastic in black color
Front display	Transparent glass
Wave shape	Sinusoidal
Frequency	60Hz
Consumption (VA)	0,5

## Installation

PANEL CUTTING	
VOLTIMETER SIZE 72x72	68mm x 68mm
VOLTIMETER SIZE 96x96	92mm x 92mm

## Dimensions

MODEL	A (mm)	B (mm)	C (mm)	D (mm)	E (mm)	F (mm)
VOLTIMETER SIZE 72x72	72	72	65	49	66	66
VOLTIMETER SIZE 96x96	96	96	65	49	90	90

